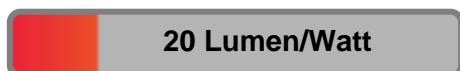


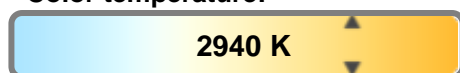
Light efficiency:



Light quality:



Color temperature:

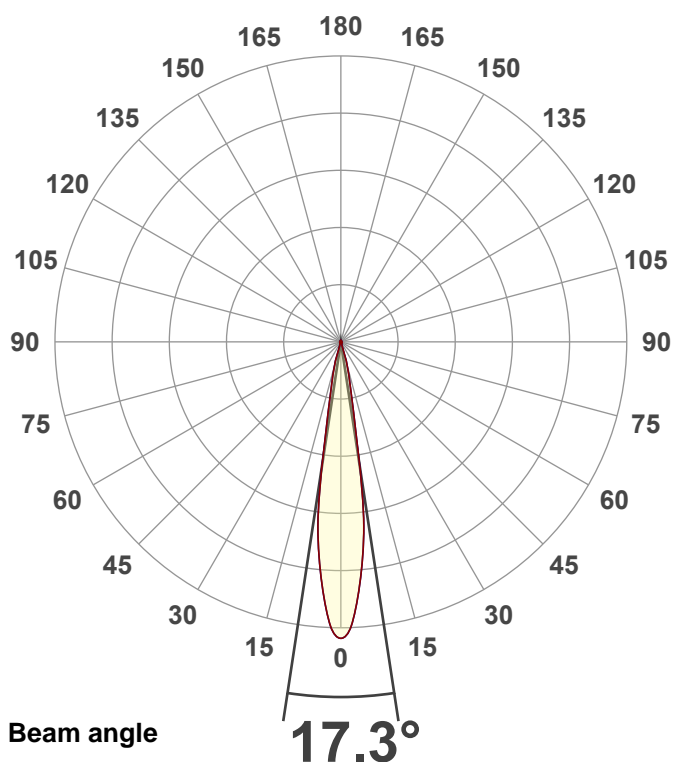


Output: 15617 lm
Peak: 113620 cd
Power: 766 W
PF: 1.0



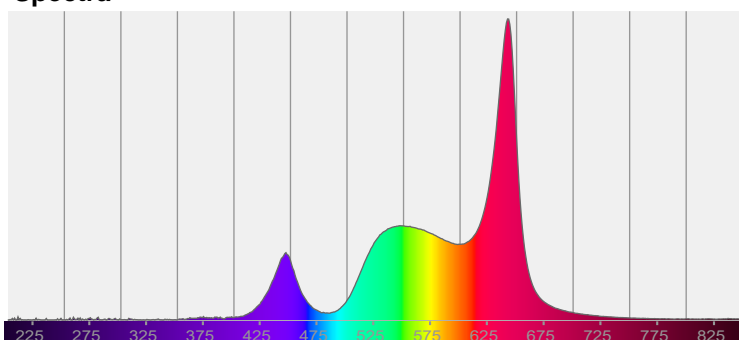
Product name:
Hydro Flex L19 (Zoom 50% 3000K)
Item number:

Date and time:
9/6/2025 12:28:12 PM

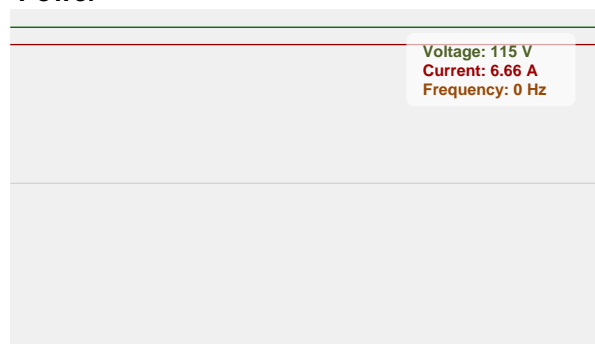


CIE 1931
x: 0.440
y: 0.403

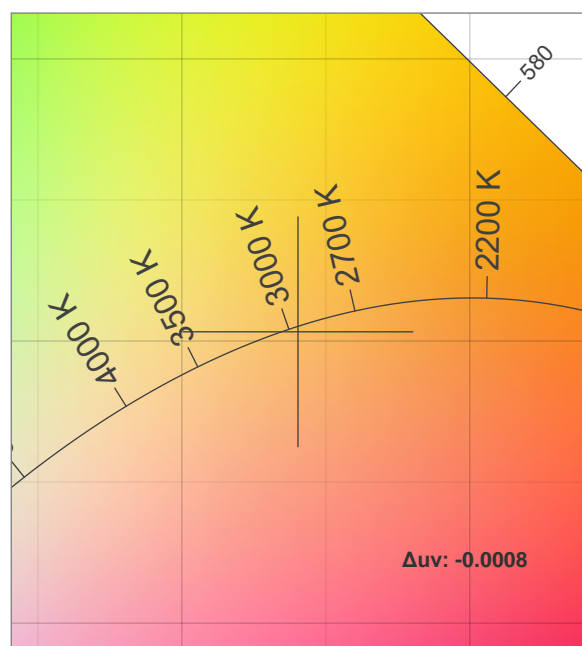
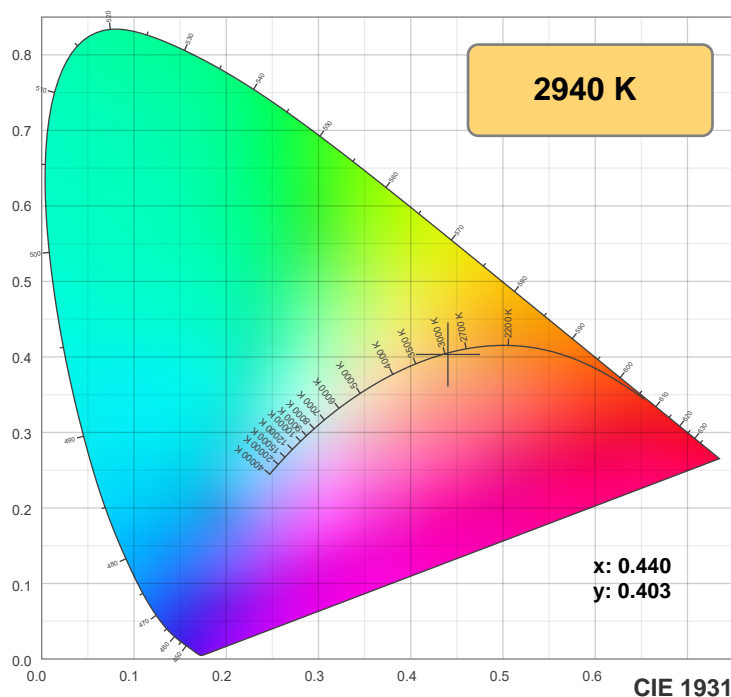
Spectra



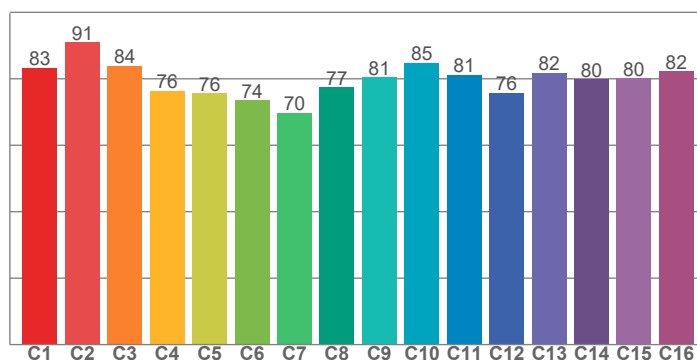
Power



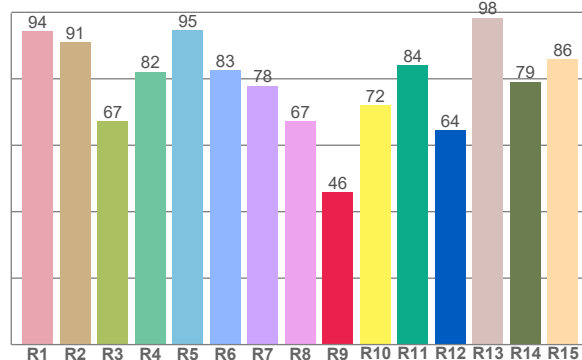
Color details



TM-30: 80.4



CRI: 82.2 (R1-R8)



CRI R values, only R1-R8 are used to calculate final CRI value

R1	R2	R3	R4	R5	R6	R7	R8	R9	R10	R11	R12	R13	R14	R15
94.3	91.1	67.2	82.1	94.7	82.7	77.9	67.2	45.8	72.0	84.0	64.4	98.4	79.1	85.8

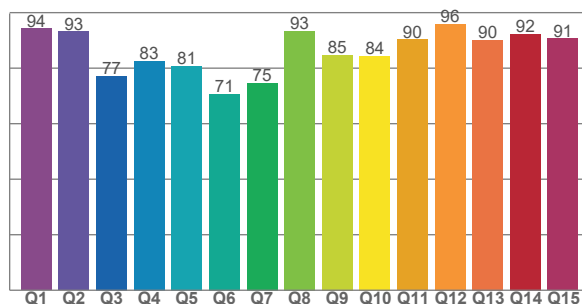
TM30 C values, 16 binned values out of total of 99 C values

C1	C2	C3	C4	C5	C6	C7	C8	C9	C10	C11	C12	C13	C14	C15	C16
83.3	90.9	83.9	76.3	75.6	73.6	69.7	77.5	80.5	84.8	81.3	75.8	81.9	79.9	80.1	82.2

CQS Q values

Q1	Q2	Q3	Q4	Q5	Q6	Q7	Q8	Q9	Q10	Q11	Q12	Q13	Q14	Q15
94.3	93.2	77.2	82.7	80.8	70.7	74.7	93.4	84.7	84.4	90.4	95.9	90.1	92.3	90.6

CQS: 84.2



Color parameters

Color temperature	Color rendering index	Red component	Color fidelity	Color gamut	Color quality scale	Color coordinate cie 1931	Color coordinate cie 1931	Color coordinate	Color coordinate	Color deviation from black body
CCT	CRI	CRI R9	TM30 Rf	TM30 Rg	CQS	x	y	u	v	Δuv
2940 K	82.2	45.8	80.4	112.7	84.2	0.440	0.403	0.253	0.348	-0.0008

TM-30 details

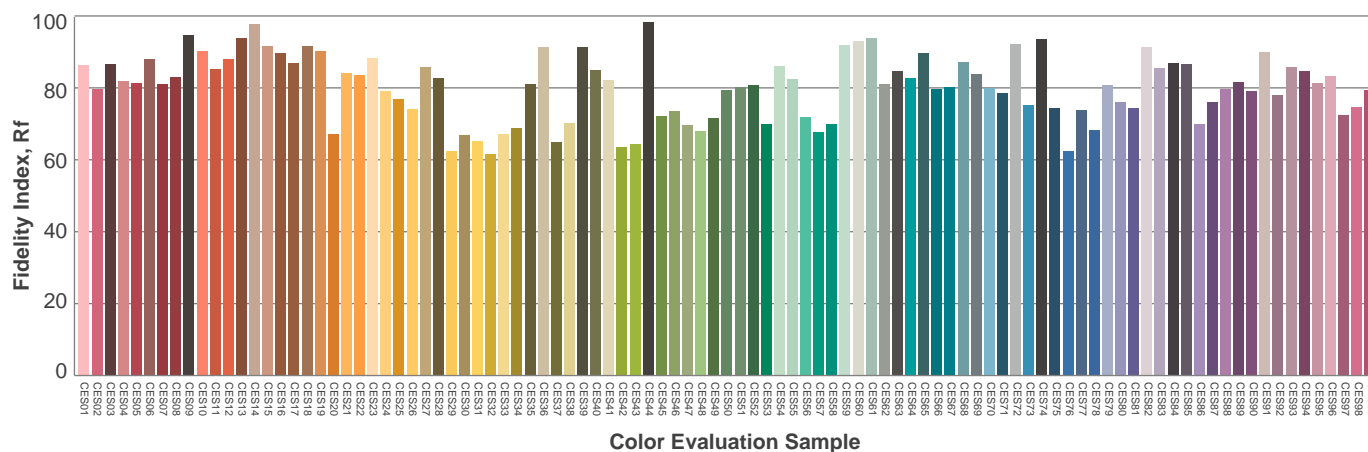
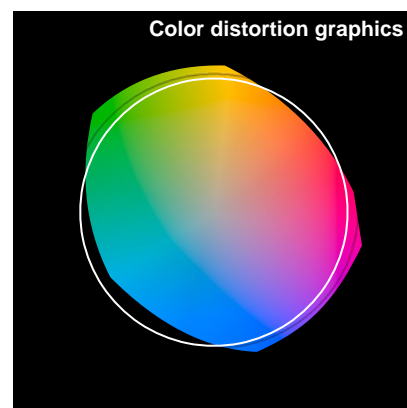
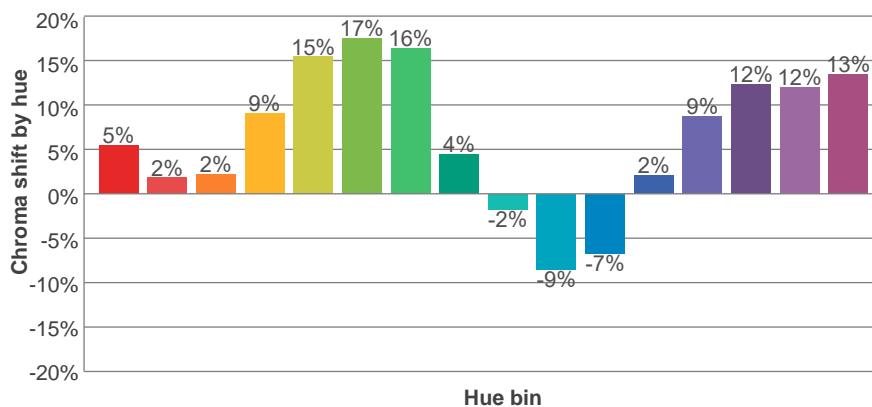
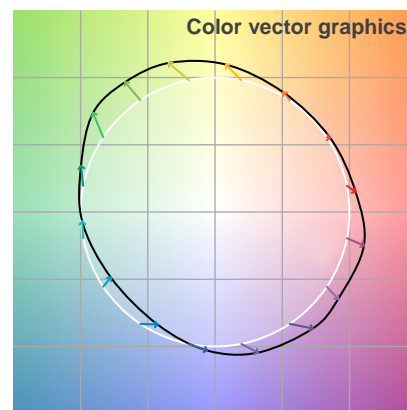
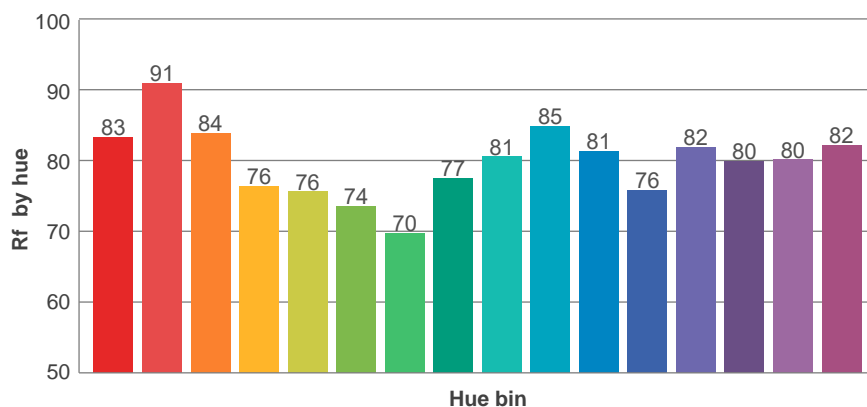
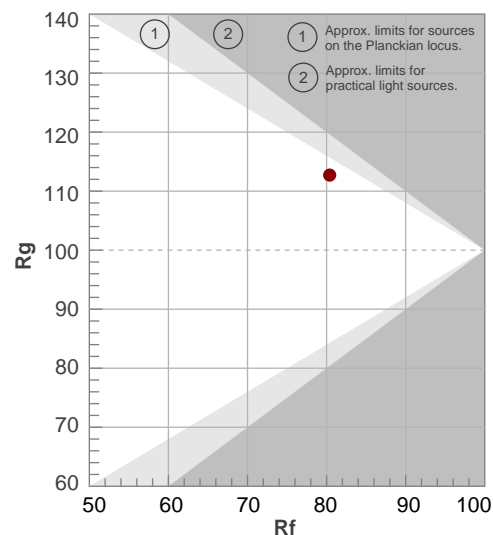
Rf 80.4

Fidelity index Rf

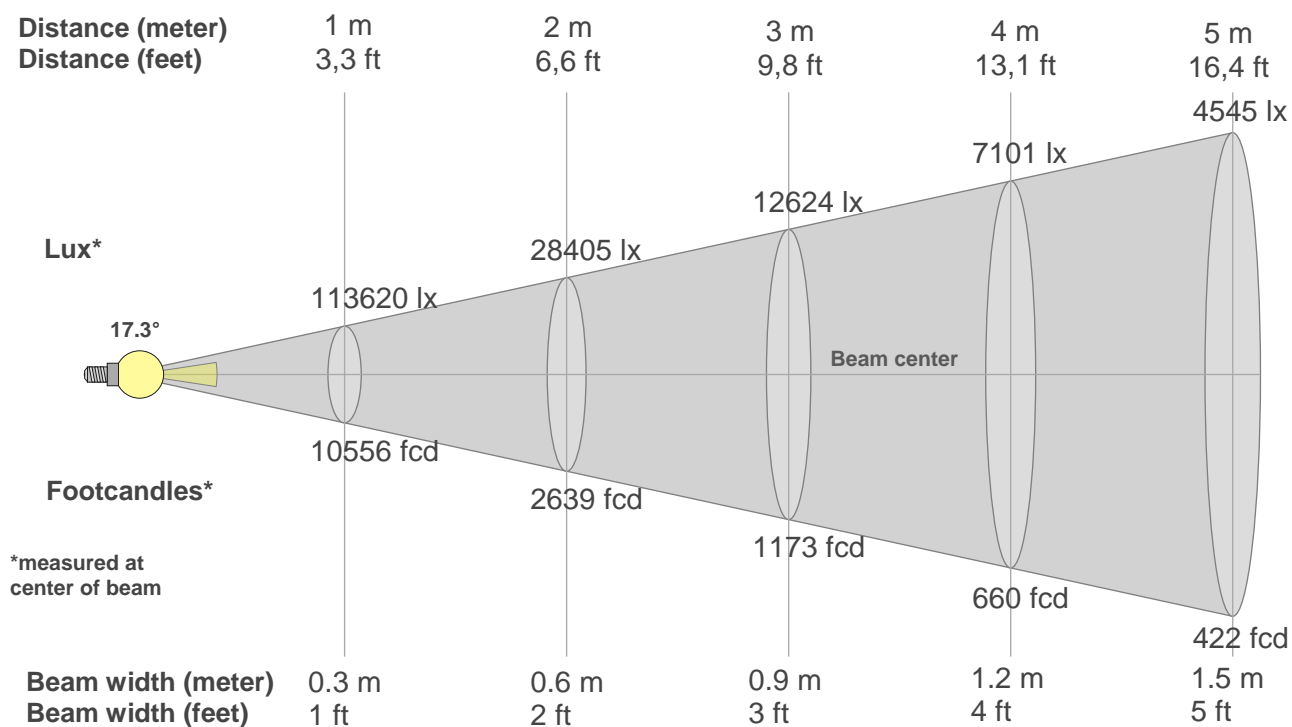
Rg 112.7

Gamut index Rg

Hue Bin	R _f	Shifts (%)	
		Chroma	Hue
1	83	5%	-6%
2	91	2%	-2%
3	84	2%	7%
4	76	9%	13%
5	76	15%	12%
6	74	17%	2%
7	70	16%	-11%
8	77	4%	-14%
9	81	-2%	-12%
10	85	-9%	-3%
11	81	-7%	11%
12	76	2%	14%
13	82	9%	11%
14	80	12%	12%
15	80	12%	-3%
16	82	13%	-3%



Beam details



Beam intensities from 1-20m

1m	2m	3m	4m	5m	6m	7m	8m	9m	10m	11m	12m	13m	14m	15m	16m	17m	18m	19m	20m
3.3ft	6.6ft	9.8ft	13.1ft	16.4ft	19.7ft	23ft	26.2ft	29.5ft	32.8ft	36.1ft	39.4ft	42.7ft	45.9ft	49.2ft	52.5ft	55.8ft	59.1ft	62.3ft	65.6ft
113620lx	28405lx	12624lx	7101lx	4545lx	3156lx	2319lx	1775lx	1403lx	1136lx	939lx	789lx	672lx	580lx	505lx	444lx	393lx	351lx	315lx	284lx
10555.6 fcd	2638.9 fcd	1172.8 fcd	659.7 fcd	422.2 fcd	293.2 fcd	215.4 fcd	164.9 fcd	130.3 fcd	105.6 fcd	87.2 fcd	73.3 fcd	62.5 fcd	53.9 fcd	46.9 fcd	41.2 fcd	36.5 fcd	32.6 fcd	29.2 fcd	26.4 fcd

Intensities in 0° c-plane

0°	1°	2°	3°	4°	5°	6°	7°	8°	9°	10°	11°	12°	13°	14°	15°	16°	17°	18°	19°
114k	114k	114k	107k	99k	91k	83k	75k	64k	53k	41k	30k	19k	15k	12k	8k	5k	2k	1k	1k
100%	100%	100%	94%	87%	80%	73%	66%	56%	46%	36%	27%	17%	13%	10%	7%	4%	2%	1%	1%

Intensities in 90° c-plane

0°	1°	2°	3°	4°	5°	6°	7°	8°	9°	10°	11°	12°	13°	14°	15°	16°	17°	18°	19°
114k	114k	114k	107k	99k	91k	83k	75k	64k	53k	41k	30k	19k	15k	12k	8k	5k	2k	1k	1k
100%	100%	100%	94%	87%	80%	73%	66%	56%	46%	36%	27%	17%	13%	10%	7%	4%	2%	1%	1%

Intensities in 180° c-plane

0°	1°	2°	3°	4°	5°	6°	7°	8°	9°	10°	11°	12°	13°	14°	15°	16°	17°	18°	19°
114k	114k	114k	107k	99k	91k	83k	75k	64k	53k	41k	30k	19k	15k	12k	8k	5k	2k	1k	1k
100%	100%	100%	94%	87%	80%	73%	66%	56%	46%	36%	27%	17%	13%	10%	7%	4%	2%	1%	1%

Intensities in 270° c-plane

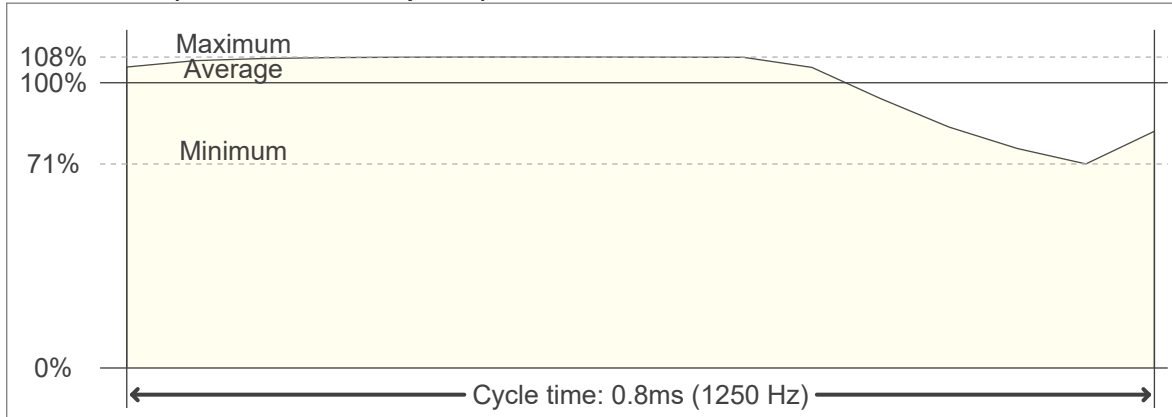
0°	1°	2°	3°	4°	5°	6°	7°	8°	9°	10°	11°	12°	13°	14°	15°	16°	17°	18°	19°
114k	114k	114k	107k	99k	91k	83k	75k	64k	53k	41k	30k	19k	15k	12k	8k	5k	2k	1k	1k
100%	100%	100%	94%	87%	80%	73%	66%	56%	46%	36%	27%	17%	13%	10%	7%	4%	2%	1%	1%

Beam angle 50%	Field angle 10%	Cutoff angle 2,5%	Intensity ratio in 120° cone	Intensity ratio in 90° cone
17.3°	28.1°	33.4°	71.5%	66.9%

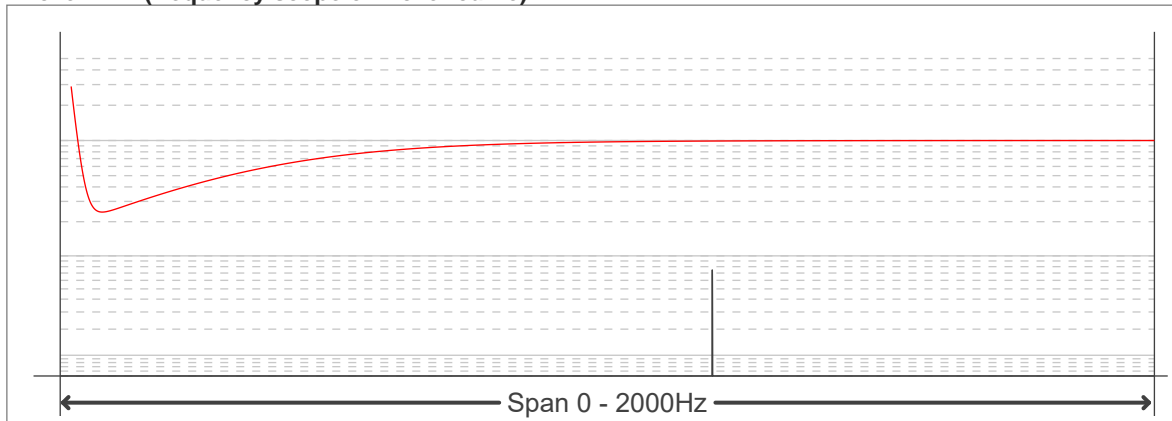
Flicker curve (complete sampled flicker signal)



Flicker frame (frame of one flicker period)



Flicker FFT (frequency scope of flicker curve)



Flicker results:

Flicker frequency:		1250 Hz	
Flicker index:	0.06	JA8/10 40Hz	0.16 %
Flicker percentage:	29.67 %	JA8/10 90Hz	0.25 %
SVM: (Visual flicker)	0.15	JA8/10 200Hz	0.44 %
PstLM	0	JA8/10 400Hz	0.77 %
Mp	0.07	JA8/10 1000Hz	1.16 %

Flicker conditions:

Sample rate:	20000 samples/second
--------------	----------------------